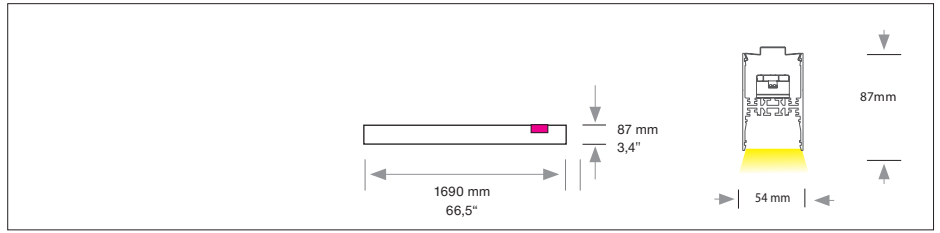
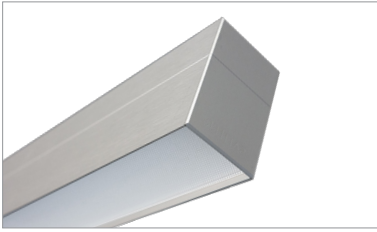
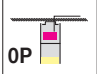


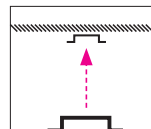
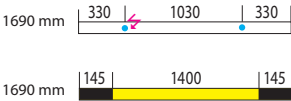
BRILLANT SINGLE

Housing: Aluminium profile with diffuser
Design: SATTLER

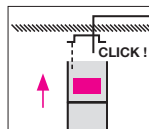


Size	Size: L x W x H mm	LED Watt direct	Lumen ¹⁾ direct	Weight ²⁾ kg/lbs	Item No.	Mounting version	Finish	LED direct	LED indirect	Dimmung	Power supply cable
	1690 x 54 x 87 mm	67,5	4.800	8,0 / 16.0	2077.	X X.	X X.	X X.	X X.	X X.	X X X.
Mounting version	 Surface mounted					X X X X.	0P.	X X.	X X.	X X.	X X X.

- Surface mounting with mounting brackets
- Position of mounting brackets can be adjusted on-site if necessary
- Power supply cable not included
- Power supply and terminal clamp integrated in luminaire
- Minimal distance to wall and other objects 50 mm
- Position of power supply outlet flexible

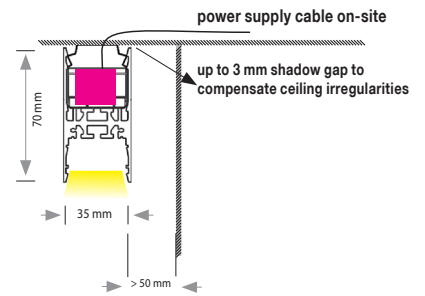





1) Fix brackets for quick installation with screws



2) Click in profile which is secured by an assembly rope

- Fixation points
- Power supply cable



Finishes	Standard:	60 silver anodised									
			X X X X.	X X.	60.	X X.	X X.	X X.	X X.	X X.	X X X.
LED	 Direct LED	Neutral-white 5000 K Sunlike Vollspektrum-LED Technologie	X X X X.	X X.	X X.	51.	X X.	X X.	X X.	X X.	X X X.
	 SELV										
	CRI > 97 MacAdam 3 L 90 B10 72.000 h	Diffusor									
		Microprismatic symmetrical, 65° beam angle	X X X X.	X X.	X X.	X X.	10.	X X.	X X.	X X.	X X X.
			X X X X.	X X.	X X.	X X.	X X.	00.	X X.	X X.	X X X.
			X X X X.	X X.	X X.	X X.	X X.	X X.	00.	X X.	X X X.
Dimming		Dimmable to 1% via DALI 2, switch dim	X X X X.	X X.	X X.	X X.	X X.	X X.	X X.	06.	X X X.
Mounting		Mounting version 0P mounting brackets included	X X X X.	X X.	X X.	X X.	X X.	X X.	X X.	X X.	000.

▶

1580.	0A.	60.	51.	10.	51.	99.	06.	A15.
-------	-----	-----	-----	-----	-----	-----	-----	------

Complete order number

Input voltage 220-240 VAC 50-60 Hz

