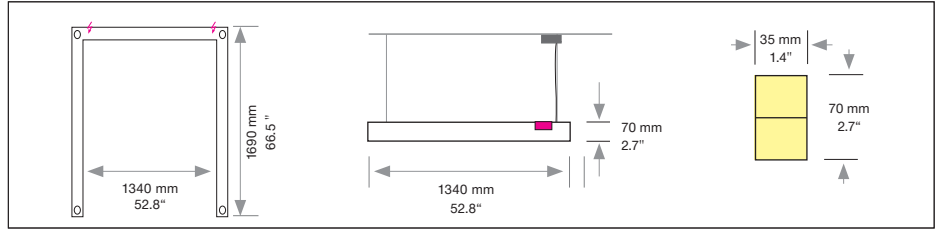
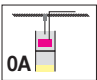


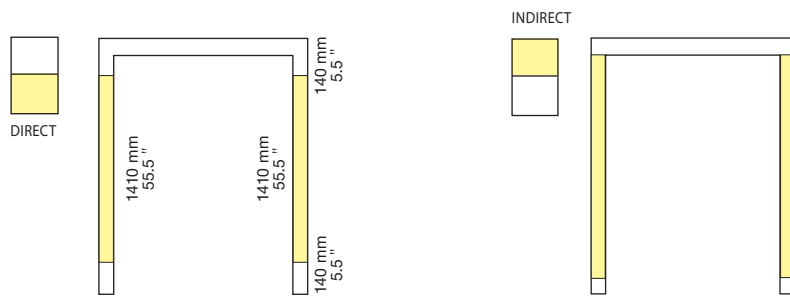
# SATTLER




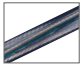
## BRILLANT

Housing: Aluminium profile with diffuser  
Design: SATTLER

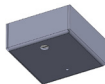


Size	Size: L x W x H mm	LED Watt direct / indirect	Lumen <sup>1)</sup> direct / indirect	Weight <sup>2)</sup> kg/lbs	Item No.	Mounting version	Finish	LED direct	LED indirect	Dimmung	Power supply cable
	1690 x 1340 x 70 mm	114 / 52 W	7.380 / 3.420	8,0 / 16.0	1580.	X X.	X X.	XX	XX	XX	X X X.
Mounting version					X X X X.	0A.	X X.	XX	XX	XX	X X X.



Finishes Standard:		60 silver anodised			X X X X.	X X.	60.	XX	XX	XX	X X X.
LED		Direct LED	Neutral-white 5000 K <b>Sunlike Vollspektrum-LED Technologie</b>		X X X X.	X X.	X X.	51.	XX	XX	X X X.
CRI > 97 MacAdam 3   L 90   B10   72.000 h		Diffusor	Microprismatic symmetrical, 65° beam angle		X X X X.	X X.	X X.	10.	XX	XX	X X X.
		Indirect LED	Neutral-white 5000 K <b>Sunlike Vollspektrum-LED Technologie</b>		X X X X.	X X.	X X.	XX	XX	51.	X X X.
		Diffusor	Opal diffuser		X X X X.	X X.	X X.	XX	XX	99.	X X X.
Dimming			Dimmable to 1% via DALI 2, switch dim		X X X X.	X X.	X X.	XX	XX	XX	06.
Mounting kit including connection box			<b>Mounting version 0A</b> 1500 mm steel cable suspension + 1800 mm PVC cable Z91 transparent		X X X X.	X X.	X X.	XX	XX	XX	A15.

**Connection box**  
Surface mounted connection box + support of steel cable suspension  
220 - 240 VAC/DALI



L: 70 mm  
W: 70 mm  
H: 30 mm



**12**  
white powder coated  
RAL 9003



1580.	0A.	60.	51.	10.	51.	99.	06.	A15.
-------	-----	-----	-----	-----	-----	-----	-----	------

Complete order number

Input voltage 220-240 VAC 50-60 Hz



Handcrafted in Germany, certified quality

IP 20

Protective rating luminaire



Direct / indirect light distribution



Protection class I



Luminaires are suitable for mounting on ordinary flammable materials, which have an inflammation point of at least 200° C. / 392° F.

www.sattler-lighting.com

Technical data is subject to change. Errors and omissions excepted 1) Net lumen output: Losses due to diffusers and reflectors are considered. Lumen values refer to an ambient temperature of max. 35° C / 95° F. 2) Weight of lights without remote technical unit or canopy.