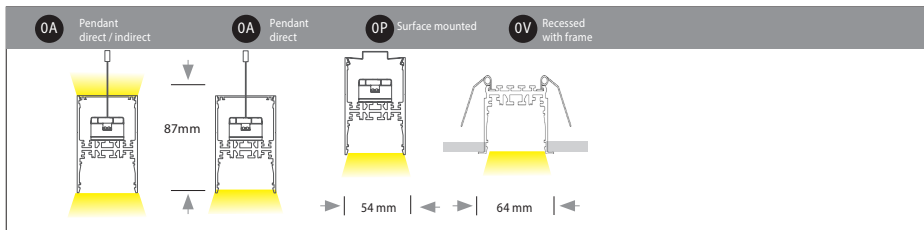
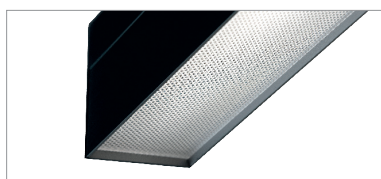


### PALADIO PRISM 54

Housing: Aluminium profile with integrated diffuser and power supply  
 Design: SATTLER



| L * x W x H mm   | Wattage direct / indirect | Lumen direct / indirect | Lumen / W direct / indirect | Weight kg | Item No. | Mounting version | Colour | LED direct | LED indirect | Dimming | Power supply cable |        |
|------------------|---------------------------|-------------------------|-----------------------------|-----------|----------|------------------|--------|------------|--------------|---------|--------------------|--------|
| Single luminaire | 1130 x 54 x 87            | 23 / 11                 | 2.440 / 970                 | 107 / 86  | 3,4      | 2070.            | X X.   | X X.       | X X.         | X X.    | X X.               | X X X. |
|                  | 1410                      | 28 / 11                 | 3.040 / 970                 | 107 / 86  | 5,2      | 2071.            | X X.   | X X.       | X X.         | X X.    | X X.               | X X X. |
|                  | 1690                      | 34 / 11                 | 3.650 / 970                 | 107 / 86  | 6,9      | 2076.            | X X.   | X X.       | X X.         | X X.    | X X.               | X X X. |
|                  | 2250                      | 45 / 23                 | 4.850 / 1.940               | 107 / 86  | 9,4      | 2072.            | X X.   | X X.       | X X.         | X X.    | X X.               | X X X. |
|                  | 2810                      | 57 / 23                 | 6.060 / 1.940               | 107 / 86  | 11,9     | 2073.            | X X.   | X X.       | X X.         | X X.    | X X.               | X X X. |
|                  | 3370                      | 68 / 34                 | 7.270 / 2.920               | 107 / 86  | 14,4     | 2074.            | X X.   | X X.       | X X.         | X X.    | X X.               | X X X. |
|                  | 3930                      | 79 / 45                 | 8.480 / 3.890               | 107 / 86  | 16,9     | 2075.            | X X.   | X X.       | X X.         | X X.    | X X.               | X X X. |

Separate specification sheet for system luminaires

\*additional 3mm per end cap

|                  |  |  |  |          |                          |      |      |      |      |      |      |        |
|------------------|--|--|--|----------|--------------------------|------|------|------|------|------|------|--------|
| Mounting version |  |  |  | X X X X. | <input type="checkbox"/> | X X. | X X. | X X. | X X. | X X. | X X. | X X X. |
|------------------|--|--|--|----------|--------------------------|------|------|------|------|------|------|--------|

|        |  |          |  |  |  |  |          |                          |      |      |      |      |      |        |
|--------|--|----------|--|--|--|--|----------|--------------------------|------|------|------|------|------|--------|
| Finish |  | Optional |  |  |  |  | X X X X. | <input type="checkbox"/> | X X. | X X. | X X. | X X. | X X. | X X X. |
|--------|--|----------|--|--|--|--|----------|--------------------------|------|------|------|------|------|--------|

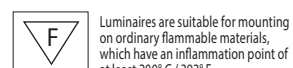
|            |  |          |  |          |      |      |     |      |      |      |      |        |
|------------|--|----------|--|----------|------|------|-----|------|------|------|------|--------|
| LED direct |  | LED      | Standard: Neutral-white 4000 K                   | X X X X. | X X. | X X. | 40. | X X. | X X. | X X. | X X. | X X X. |
|            |  |          | Optional: Extra Warm-white 2700 K                | X X X X. | X X. | X X. | 27. | X X. | X X. | X X. | X X. | X X X. |
|            |  |          | Warm-white 3000 K                                | X X X X. | X X. | X X. | 30. | X X. | X X. | X X. | X X. | X X X. |
|            |  |          | Tunable white 2700 - 6500 K                      | X X X X. | X X. | X X. | 80. | X X. | X X. | X X. | X X. | X X X. |
|            |  | DIFFUSER | Standard: Microprism symmetrical, 65° beam angle | X X X X. | X X. | X X. | 10. | X X. | X X. | X X. | X X. | X X X. |
|            |  |          | Opal diffuser                                    | X X X X. | X X. | X X. | 99. | X X. | X X. | X X. | X X. | X X X. |

|              |  |          |   |          |      |      |      |      |      |      |      |      |        |
|--------------|--|----------|---|----------|------|------|------|------|------|------|------|------|--------|
| LED indirect |  | LED      | Standard: No indirect light output            | X X X X. | X X. | X X. | X X. | X X. | X X. | 00.  | 00.  | X X. | X X X. |
|              |  |          | Optional: Neutral-white 4000 K                | X X X X. | X X. | X X. | X X. | X X. | X X. | 40.  | X X. | X X. | X X X. |
|              |  |          | Extra Warm-white 2700 K                       | X X X X. | X X. | X X. | X X. | X X. | X X. | 27.  | X X. | X X. | X X X. |
|              |  |          | Warm-white 3000 K                             | X X X X. | X X. | X X. | X X. | X X. | X X. | 30.  | X X. | X X. | X X X. |
|              |  |          | Tunable white 2700 - 6500 K*                  | X X X X. | X X. | X X. | X X. | X X. | X X. | 80.  | X X. | X X. | X X X. |
|              |  |          | *Tunable white also necessary for direct side |          |      |      |      |      |      |      |      |      |        |
|              |  | DIFFUSER | Standard: Opal Diffuser                       | X X X X. | X X. | X X. | X X. | X X. | X X. | X X. | 99.  | X X. | X X X. |

|         |   |          |      |      |      |      |      |      |      |     |        |
|---------|---|----------|------|------|------|------|------|------|------|-----|--------|
| Dimming | Standard: Dimmable to 1% via DALI-2, switch Dim | X X X X. | X X. | X X. | X X. | X X. | X X. | X X. | X X. | 06. | X X X. |
|         | Optional: Casambi                               | X X X X. | X X. | X X. | X X. | X X. | X X. | X X. | X X. | 08. | X X X. |

|              |  |                          |  |          |      |      |      |      |      |      |      |      |
|--------------|--|--------------------------|--|----------|------|------|------|------|------|------|------|------|
| Mounting kit |  | Mounting version 0A      | 1500 mm steel cable suspension + 1800 mm PVC cable Z91 transparent | X X X X. | X X. | X X. | X X. | X X. | X X. | X X. | X X. | A15. |
|              |  |                          | 3000 mm steel cable suspension + 3300 mm PVC cable Z91 transparent | X X X X. | X X. | X X. | X X. | X X. | X X. | X X. | X X. | A30. |
|              |  | Mounting version 0P   0V | mounting brackets included   | X X X X. | X X. | X X. | X X. | X X. | X X. | X X. | X X. | 000  |

Pieces:  Complete order number:



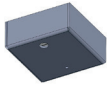
# PALADIO PRISM 54

Housing: Aluminium profile with integrated diffuser and power supply  
 Design: SATTLER

### Accessories

#### Connection box

Surface mounted connection box + support of steel cable suspension  
 220 - 240 VAC/DALI



L: 70 mm  
 W: 70 mm  
 H: 30 mm



12 white powder coated RAL 9003



60 silver anodised



62 black anodised



65 champ. gold anodised



66 bronze anodised

| Item No.         | Quantity |
|------------------|----------|
| 2002.00.00.00.12 | _____    |
| 2002.00.00.00.60 | _____    |
| 2002.00.00.00.62 | _____    |
| 2002.00.00.00.65 | _____    |
| 2002.00.00.00.66 | _____    |

#### End caps

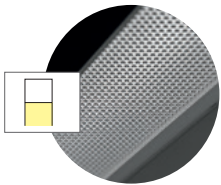
End caps in luminaire colour pre-mounted with every single luminaire.

### Technical information

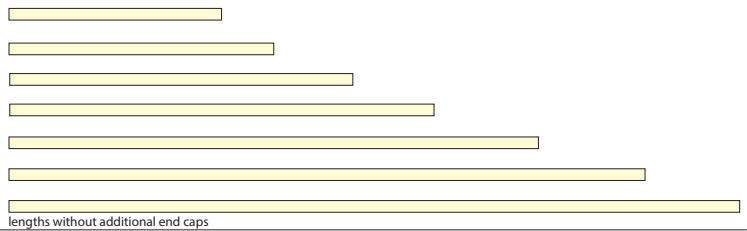
L x W x H mm

Item No.  
 Single luminaires

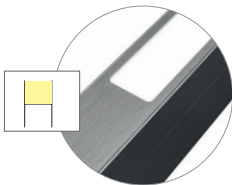
#### Direct side with microprism - full surface illumination



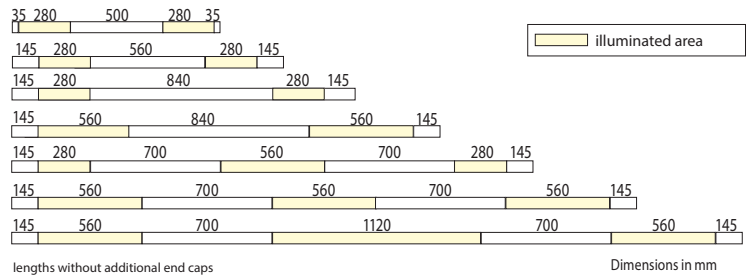
|                   |       |
|-------------------|-------|
| 1130 x 54 x 87 mm | 2070. |
| 1410              | 2071. |
| 1690              | 2076. |
| 2250              | 2072. |
| 2810              | 2073. |
| 3370              | 2074. |
| 3930              | 2075. |



#### Indirect side with opal diffuser - illumination by segments



|                   |       |
|-------------------|-------|
| 1130 x 54 x 87 mm | 2070. |
| 1410              | 2071. |
| 1690              | 2076. |
| 2250              | 2072. |
| 2810              | 2073. |
| 3370              | 2074. |
| 3930              | 2075. |



Input voltage 220 - 240 VAC 50/60 Hz

#### Maximum series connection

B 16A Circuit breaker (2,5 mm<sup>2</sup>)  
 luminaire size up to 3m = 14 pcs.  
 from 3m = 7 pcs.

B 10A Circuit breaker (1,5 mm<sup>2</sup>)  
 luminaire size up to 3m = 8 pcs.  
 from 3m = 4 pcs.

#### DALI programming

The table on the right shows the amount of DALI addresses necessary per fixture

|                           | direct light only | direct / indirect light |
|---------------------------|-------------------|-------------------------|
| 1130   1410   1690   2250 | 1                 | 1                       |
| 2810   3370               | 1                 | 2                       |
| 3930                      | 2                 | 2                       |

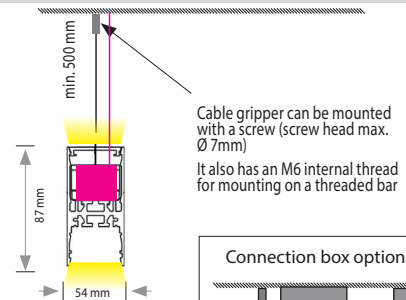
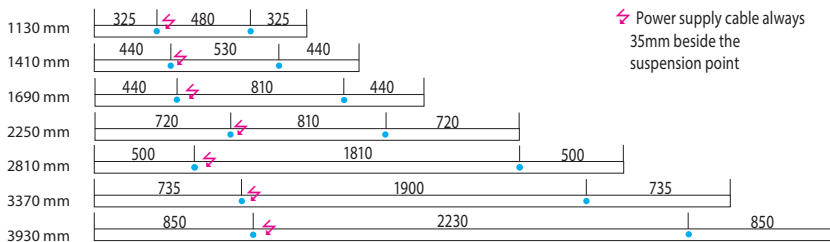
### Mounting versions

#### 0A - Pendant luminaire

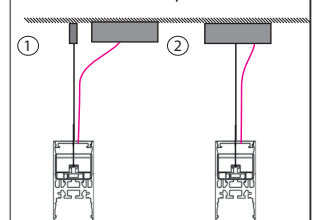
- Suspended with height adjustable steel cables (1500 mm or 3000 mm), adjustment to be done on ceiling
- Recommended minimum distance to ceiling for luminaires with indirect light is 500 mm to achieve even illumination
- Power supply integrated in luminaire.
- Position of suspension points can be repositioned on-site if necessary (within limits, please check with our office)
- Power supply cable included for single luminaires
- Connection box optional

#### Suspension points

lengths without additional end caps



#### Connection box optional

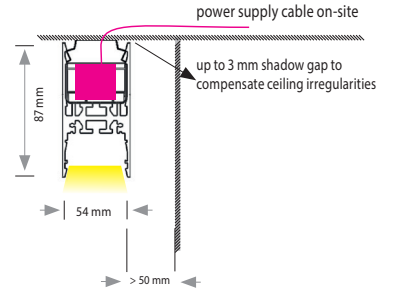
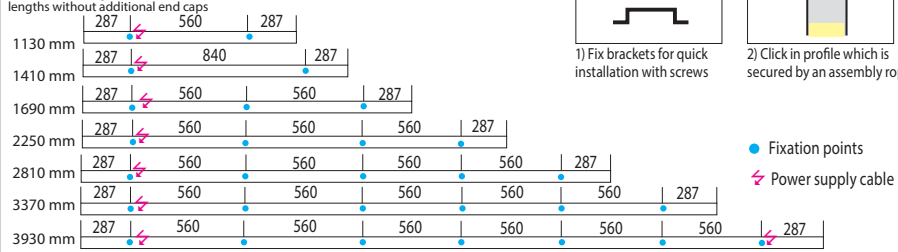


### PALADIO PRISM 54

#### OP - Surface mounted luminaire

- Surface mounting with mounting brackets
- Position of mounting brackets can be adjusted on-site if necessary (within limits, please check with our office)
- Power supply cable not included
- Power supply and terminal clamp integrated in luminaire
- Minimal distance to wall and other objects 50 mm
- Position of power supply outlet flexible

#### Fixation points - have to be equally distributed

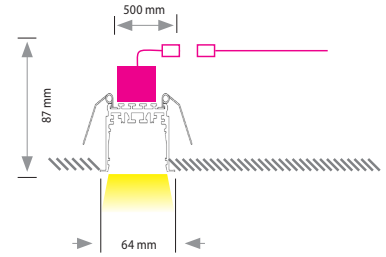
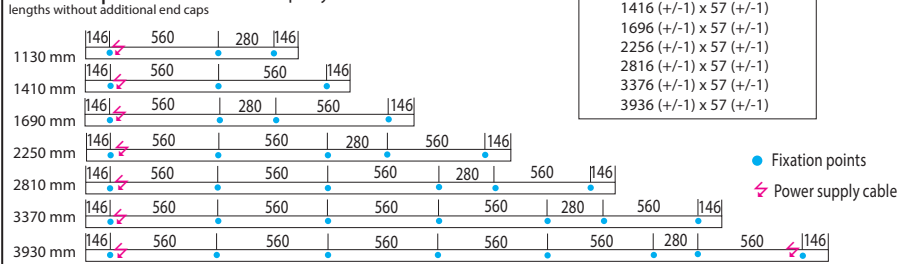


Dimensions in mm

#### OV - Recessed luminaire with frame

- Luminaire with springs for easy mounting in plasterboard ceiling
- Delivery with quick mounting plug (Adels AC 164/5) incl. 500 mm connection cable
- Up to ceiling thickness of 35 mm
- Fixation points can be adapted on-site if necessary (within limits, please check with our office)

#### Fixation points - have to be equally distributed



Dimensions in mm

## PALADIO PREMIUM FINISHES PALADIO PREMIUM OBERFLÄCHEN

Our premium finishes are high-quality handcrafted surfaces. Each piece is unique.  
Small inclusions and irregularities in the surface are part of the appearance.

Bei unseren Premium Oberflächen handelt es sich um Naturprodukte. Jedes Exemplar stellt ein Unikat dar.  
Kleine Einschlüsse und Unregelmäßigkeiten in der Oberfläche gehören zum Erscheinungsbild.

### WOOD VENEER HOLZFURNIER



46  
ELM  
ULME



47  
OAK  
EICHE



48  
CHERRY  
KIRSCHBAUM



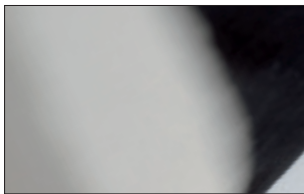
49  
SMOKED EUCALYPTUS  
GERÄUCHERTER  
EUKALYPTUS



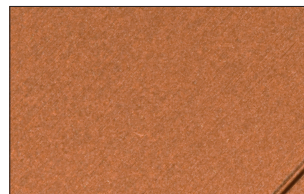
50  
WALNUT  
NUSSBAUM

base colour luminaire - black anodised / end caps + cover - black anodised  
Grundfarbe Leuchtgehäuse - schwarz eloxiert / Endkappen + Abdeckblech - schwarz eloxiert

### OTHERS WEITERE



22  
ALUMINIUM POLISHED  
ALUMINIUM POLIERT



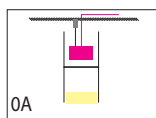
84  
BRUSHED COPPER, MATT  
KUPFER GEBÜRSTET, MATT

cover - black anodised / end caps - same colour as luminaire  
Abdeckblech - schwarz eloxiert / Endkappen - in Leuchtenfarbe

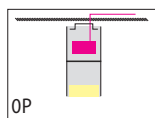
### MOUNTING VERSIONS MONTAGEVERSIONEN

Premium finishes only compatible with PALADIO 35/54 SINGLE LUMINAIRES with mounting versions 0A - Pendant or 0P Surface-mounted.

Premium Oberflächen nur kompatibel mit PALADIO 35/54 EINZELLEUCHTEN mit den Montageversionen 0A - Pendel oder 0P - Anbau.



0A  
Pendant/Pendel



0P  
Surface mounted/  
Anbau