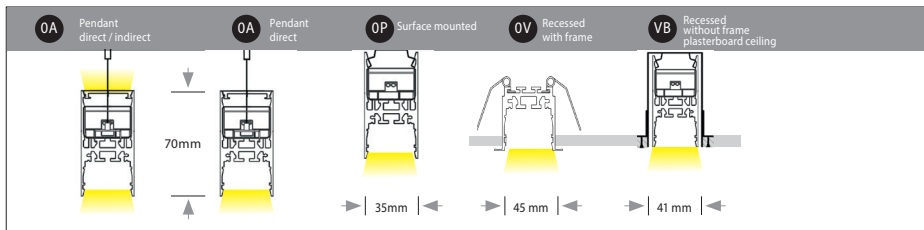


PALADIO LENS 35

Housing: Aluminium profile with integrated mini lens reflector and power supply
 Design: SATTLER



L* x W x H mm	Wattage direct / indirect	Lumen direct / indirect	Lumen / W direct / indirect	Weight kg	Item No.	Mounting version	Colour	LED direct	LED indirect	Dimming	Power supply cable	
Single luminaire	1130 x 35 x 70	15 / 15	1.872 / 1.240	125 / 83	2,4	2080.	XX.	XX.	XX.	XX.	XX.	XXX.
	1410	15 / 15	1.872 / 1.240	125 / 83	3,9	2081.	XX.	XX.	XX.	XX.	XX.	XXX.
	1690	15 / 15	1.872 / 1.240	125 / 83	5,4	2086.	XX.	XX.	XX.	XX.	XX.	XXX.
	2250	30 / 30	3.744 / 2.480	125 / 83	7,3	2082.	XX.	XX.	XX.	XX.	XX.	XXX.
	2810	30 / 30	3.744 / 2.480	125 / 83	9,3	2083.	XX.	XX.	XX.	XX.	XX.	XXX.
	3370	45 / 45	5.620 / 3.720	125 / 83	11,3	2084.	XX.	XX.	XX.	XX.	XX.	XXX.
	3930	45 / 60	5.620 / 4.960	125 / 83	13,3	2085.	XX.	XX.	XX.	XX.	XX.	XXX.

Separate specification sheet for system luminaires

*additional 3mm per end cap

Mounting version	OA	OP	OV	VB	Item No.	Colour	LED direct	LED indirect	Dimming	Power supply cable
					XXXX.	XX.	XX.	XX.	XX.	XXX.

*accessories on page 3

Finish	Standard	Optional	60 silver anodised	62 black anodised	65 champ. gold anodised	PREMIUM finishes see last page	Item No.	Colour	LED direct	LED indirect	Dimming	Power supply cable
						XXXX.	XX.	XX.	XX.	XX.	XX.	XXX.

LED direct	LED	Standard:	Neutral-white	4000 K	Item No.	Colour	LED direct	LED indirect	Dimming	Power supply cable
					XXXX.	XX.	40.	XX.	XX.	XXX.
		Optional:	Extra Warm-white	2700 K	XXXX.	XX.	27.	XX.	XX.	XXX.
			Warm-white	3000 K	XXXX.	XX.	30.	XX.	XX.	XXX.
			Tunable white	2700 - 6500 K	XXXX.	XX.	80.	XX.	XX.	XXX.
		DIFFUSER			XXXX.	XX.	32.	XX.	XX.	XXX.

LED indirect	LED	Standard:	No indirect light output	Item No.	Colour	LED direct	LED indirect	Dimming	Power supply cable
				XXXX.	XX.	XX.	00.	00.	XXX.
		Optional:	Neutral-white	4000 K	XXXX.	XX.	40.	XX.	XXX.
			Extra warm-white	2700 K	XXXX.	XX.	27.	XX.	XXX.
			Warm-white	3000 K	XXXX.	XX.	30.	XX.	XXX.
			Tunable white	2700 - 6500 K*	XXXX.	XX.	80.	XX.	XXX.
			*Tunable white also necessary for direct side						
		DIFFUSER			XXXX.	XX.	99.	XX.	XXX.

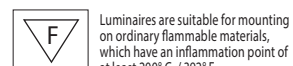
Dimming	Standard:	Dimmable to 1% via DALI-2, switch Dim	Item No.	Colour	LED direct	LED indirect	Dimming	Power supply cable
			XXXX.	XX.	XX.	XX.	06.	XXX.
	Optional:	Casambi	XXXX.	XX.	XX.	XX.	08.	XXX.

Mounting kit	Mounting version OA	1500 mm steel cable suspension + 1800 mm PVC cable Z91 transparent	Item No.	Colour	LED direct	LED indirect	Dimming	Power supply cable
			XXXX.	XX.	XX.	XX.	XX.	A15. A30.
		3000 mm steel cable suspension + 3300 mm PVC cable Z91 transparent	XXXX.	XX.	XX.	XX.	XX.	
	Mounting version OP OV VB	mounting brackets included	XXXX.	XX.	XX.	XX.	XX.	000.

Pieces:

Complete order number:

---, --, --, --, 32, --, --, --, ---



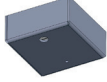
PALADIO LENS 35

Housing: Aluminium profile with integrated mini lens reflector and power supply
 Design: SATTLER

Accessories

Connection box

Surface mounted connection box + support of steel cable suspension 220 - 240 VAC/DALI



L: 70 mm
 W: 70 mm
 H: 30 mm



12 white powder coated RAL 9003



60 silver anodised



62 black anodised



65 champ. gold anodised



66 bronze anodised

Item No.	Quantity
2002.00.00.00.00.12	_____
2002.00.00.00.00.60	_____
2002.00.00.00.00.62	_____
2002.00.00.00.00.65	_____
2002.00.00.00.00.66	_____

End caps

End caps in luminaire colour pre-mounted with every single luminaire.

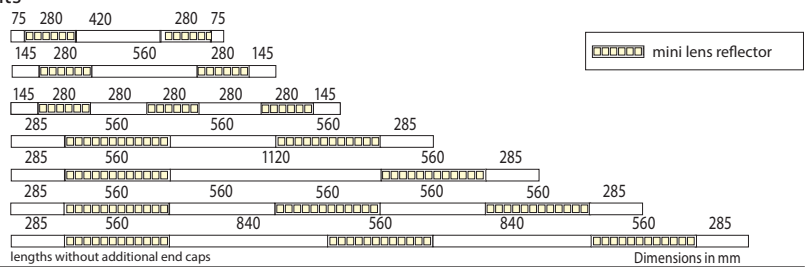
Technical information

L x W x H mm Item No.
 Single luminaires

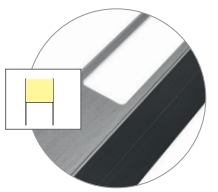
Direct side mini lens reflector - illumination by segments



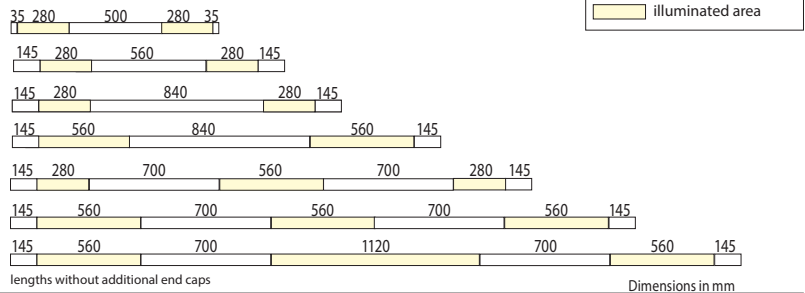
1130 x 35 x 70 mm	2080.
1410	2081.
1690	2086.
2250	2082.
2810	2083.
3370	2084.
3930	2085.



Indirect side opal diffuser - illumination by segment



1130 x 35 x 70 mm	2080.
1410	2081.
1690	2086.
2250	2082.
2810	2083.
3370	2084.
3930	2085.



Input voltage 220 - 240 VAC 50/60 Hz

Maximum series connection

B 16A Circuit breaker (2,5 mm²)
 luminaire size up to 3m = 14 pcs.
 from 3m = 7 pcs.

B 10A Circuit breaker (1,5 mm²)
 luminaire size up to 3m = 8 pcs.
 from 3m = 4 pcs.

DALI programming

The table on the right shows the amount of DALI addresses necessary per fixture

	direct light only	direct / indirect light
1130 1410 1690 2250	1	1
2810 3370 3930	1	2

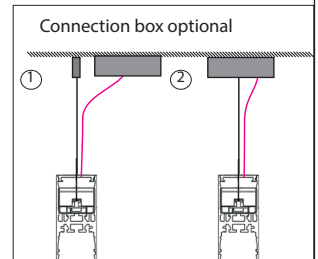
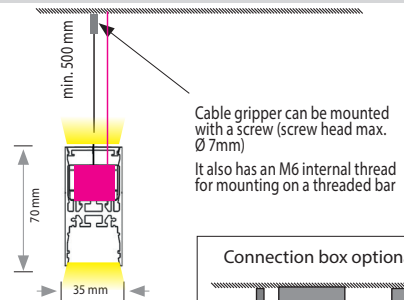
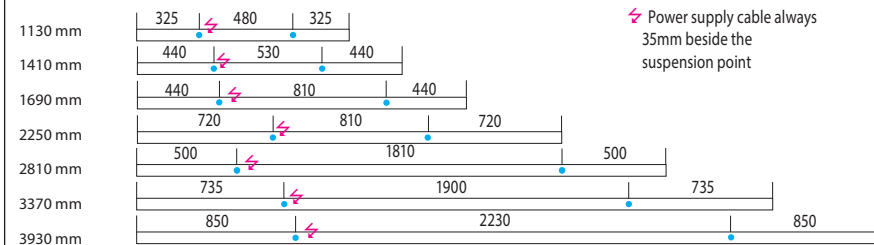
Mounting versions

0A - Pendant luminaire

- Suspended with height adjustable steel cables (1500 mm or 3000 mm), adjustment to be done on ceiling
- Recommended minimum distance to ceiling for luminaires with indirect light is 500 mm to achieve even illumination
- Power supply integrated in luminaire.
- Position of suspension points can be repositioned on-site if necessary (within limits, please check with our office)
- Power supply cable included for single luminaires
- Connection box optional

Suspension points

lengths without additional end caps

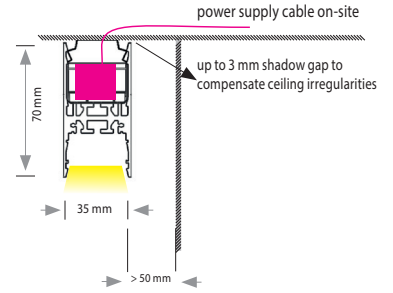
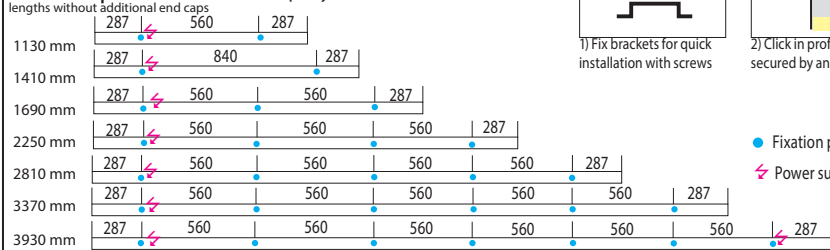


PALADIO LENS 35

OP - Surface mounted luminaire

- Surface mounting with mounting brackets
- Position of mounting brackets can be adjusted on-site if necessary (within limits, please check with our office)
- Power supply cable not included
- Power supply and terminal clamp integrated in luminaire
- Minimal distance to wall and other objects 50 mm
- Position of power supply outlet flexible

Fixation points - have to be equally distributed

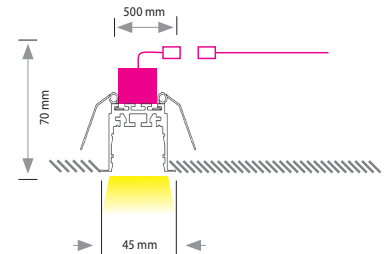
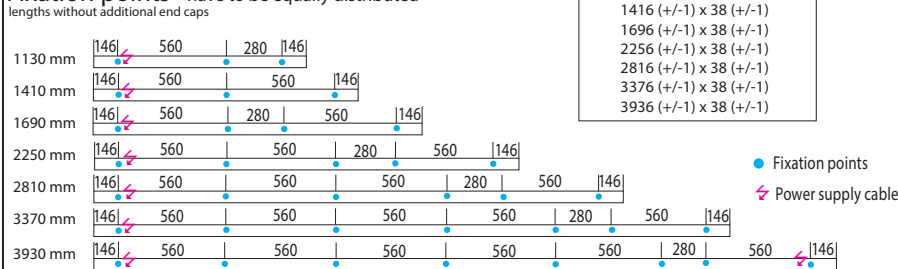


Dimensions in mm

OV - Recessed luminaire with frame

- Luminaire with springs for easy mounting in plasterboard ceiling
- Delivery with quick mounting plug (Adels AC 164/5) incl. 500 mm connection cable
- Up to ceiling thickness of 35 mm
- Fixation points can be adapted on-site if necessary (within limits, please check with our office)

Fixation points - have to be equally distributed

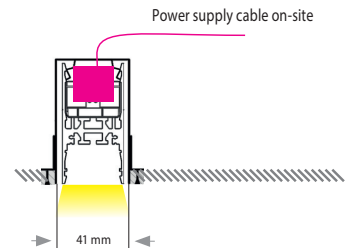
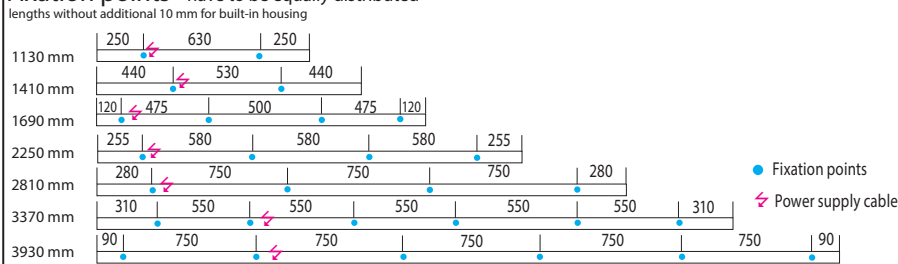


Dimensions in mm

VB - Recessed luminaire frameless plasterboard ceiling

- Luminaire for frameless recessed mounting in plasterboard ceiling
- Power supply cable not included
- Power supply integrated in luminaire
- Incl. mounting profile
- Fixation points can be adapted on-site if necessary (within limits, please check with our office)
- For further details see mounting instructions

Fixation points - have to be equally distributed



Dimensions in mm

PALADIO PREMIUM FINISHES PALADIO PREMIUM OBERFLÄCHEN

Our premium finishes are high-quality handcrafted surfaces. Each piece is unique.
Small inclusions and irregularities in the surface are part of the appearance.

Bei unseren Premium Oberflächen handelt es sich um Naturprodukte. Jedes Exemplar stellt ein Unikat dar.
Kleine Einschlüsse und Unregelmäßigkeiten in der Oberfläche gehören zum Erscheinungsbild.

WOOD VENEER HOLZFURNIER



46
ELM
ULME



47
OAK
EICHE



48
CHERRY
KIRSCHBAUM



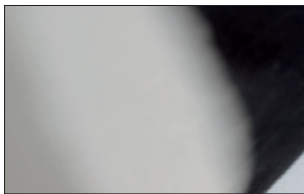
49
SMOKED EUCALYPTUS
GERÄUCHERTER
EUKALYPTUS



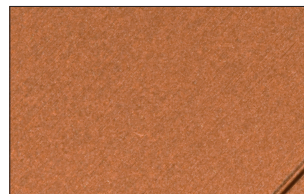
50
WALNUT
NUSSBAUM

base colour luminaire - black anodised / end caps + cover - black anodised
Grundfarbe Leuchtengehäuse - schwarz eloxiert / Endkappen + Abdeckblech - schwarz eloxiert

OTHERS WEITERE



22
ALUMINIUM POLISHED
ALUMINIUM POLIERT



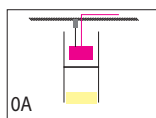
84
BRUSHED COPPER, MATT
KUPFER GEBÜRSTET, MATT

cover - black anodised / end caps - same colour as luminaire
Abdeckblech - schwarz eloxiert / Endkappen - in Leuchtenfarbe

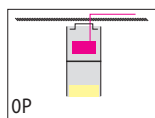
MOUNTING VERSIONS MONTAGEVERSIONEN

Premium finishes only compatible with PALADIO 35/54 SINGLE LUMINAIRES with mounting versions 0A - Pendant or 0P Surface-mounted.

Premium Oberflächen nur kompatibel mit PALADIO 35/54 EINZELLEUCHTEN mit den Montageversionen 0A - Pendel oder 0P - Anbau.



0A
Pendant/Pendel



0P
Surface mounted/
Anbau