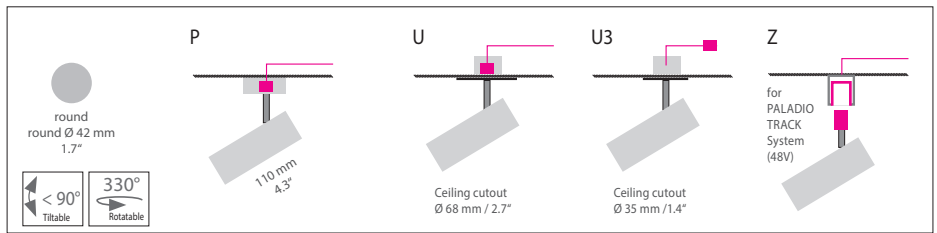
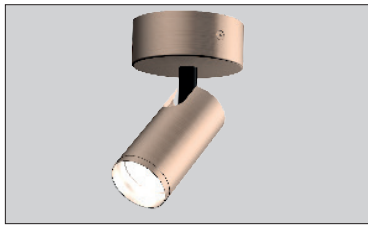


## EVOLUTION

### SPOT S

Housing: Spotlight, solid aluminium housing, 330° hinge, 24° and 38°  
Design: Ulrich Sattler



	Size: Ø / L mm	Inches	LED Watt	Lumen <sup>1)</sup>	Weight <sup>2)</sup> kg/lbs	Beam angle	Item No.	LED direct	Dimming	LED indirect	Finish	Power supply cable	Mounting version
Size	Ø 42 / L 110 mm	Ø 1.7 / L 4.3"	6,8	625	0,4 / 0.88	24°	1787.	x x.	x x.	x x.	x x.	x x x.	x
	Ø 42 / L 110 mm	Ø 1.7 / L 4.3"	6,8	625	0,4 / 0.86	40°	1788.	x x.	x x.	x x.	x x.	x x x.	x
LED	Standard: Warm-white		3000 K				x x x.	30.	x x.	x x.	x x.	x x x.	x
CRI > 90	Optional: Neutral-white		4000 K				x x x.	40.	x x.	x x.	x x.	x x x.	x
UGR<19	Extra warm-white		2700 K				x x x.	27.	x x.	x x.	x x.	x x x.	x
L80 B10 50.000 h													
SELV													
Dimming	Standard: TRIAC		(P) (U) (U3)				x x x.	x x.	11.	00.	x x.	x x x.	x
	DALI		(Z)				x x x.	x x.	61.	00.	x x.	x x x.	x
	Optional: DALI		(U) (U3)				x x x.	x x.	61.	00.	x x.	x x x.	x
	Casambi		(Z)				x x x.	x x.	81.	00.	x x.	x x x.	x
Finish	Standard: 66 bronze anodised brushed		Optional: 60 silver anodised brushed		62 black anodised brushed		65 champ. gold anodised brushed		12 white, powder coated, similar RAL 9003				
Mounting version	Standard: Direct ceiling mounting with power supply unit in canopy		Optional: U Cover Ø 80 mm / 3.1" Ceiling cutout 68 mm / 2.7" Power supply unit in cavity box		U3 Cover Ø 50 mm / 2.0" 3) Ceiling cutout 35 mm / 1.4" Power supply unit in suspended ceiling		Mounting with adapter for 48V PALADIO TRACK System						

\*mounting version U3 available from the 1st quarter of 2021

Canopy:			
Type	For use with Mounting version	Protective rating	
DA 50	U3	IP 40	Cover Ø 50 mm / 2.0" Ceiling cutout 35 mm / 1.4" Power supply unit in suspended ceiling same colour as luminaire 3) an inspection flap is required for the power supply unit
DA 80	U	IP 40	Cover Ø 80 mm / 3.1" Ceiling cutout 68 mm / 2.7" Power supply unit in cavity box same colour as luminaire
DB 78/32	P	IP 40	Cover Ø 78 mm / 3.0" H 32 mm / 1.2" same colour as luminaire

Input voltage for all external power supply unit is 220-240 VAC 50/60 Hz

---	---	---	00.	---	000.	-
-----	-----	-----	-----	-----	------	---

#### Complete order number Compatible TRIAC Dimmers

Manufacturer	Model	Quantity of parallel connection
JUNG	1224 LED UDE	14
JUNG	1731 DD	10
Merten	SBD200LED	13
ABB Busch-Jaeger	6519 U	15
ABB Busch-Jaeger	6526 U	13
Berker	296110	10
Berker	2973	12
Schneider	SBD200LED ELG174231	13

