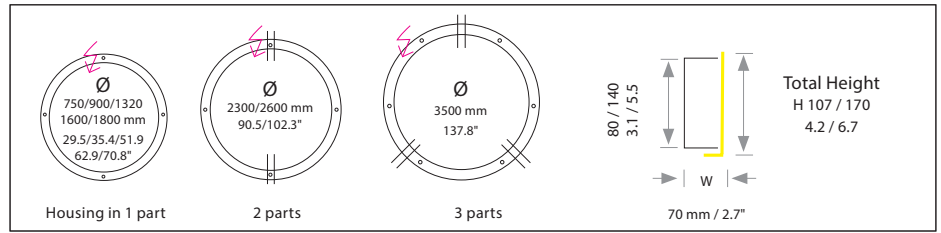


CIRCOLO

L-Version

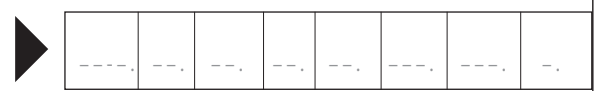
Housing: Aluminium profile with L-shaped diffuser
 Design: SATTLER, Patented



Size	Size: Ø x H x W mm	Inches	LED Watt	Lumen ¹⁾	Weight ²⁾ kg/lbs	Item No.	LED	Dimming	LED	Finishes	Power supply cable	Total height	Mounting version
	Ø 750 / 29.5"	H 107 / 4.2"	W 70 / 2.7"	48	3.381	6,5 / 14.3	228.	XX.	XX.	XX.	XXX.	107	X
	Ø 900 / 35.5"	H 107 / 4.2"	W 70 / 2.7"	57	4.091	7,5 / 16.5	229.	XX.	XX.	XX.	XXX.	107	X
	Ø 1320 / 51.9"	H 107 / 4.2"	W 70 / 2.7"	83	6.115	12,5 / 27.5	230.	XX.	XX.	XX.	XXX.	107	X
	Ø 1600 / 62.9"	H 107 / 4.2"	W 70 / 2.7"	101	7.431	14 / 31.0	231.	XX.	XX.	XX.	XXX.	107	X
	Ø 1800 / 70.8"	H 107 / 4.2"	W 70 / 2.7"	114	8.153	18 / 39.7	238.	XX.	XX.	XX.	XXX.	107	X
	Ø 2300 / 90.5"	H 107 / 4.2"	W 70 / 2.7"	145	10.747	22 / 48.5	232.	XX.	XX.	XX.	XXX.	107	X
	Ø 2600 / 102.3"	H 107 / 4.2"	W 70 / 2.7"	164	12.838	26 / 57.3	234.	XX.	XX.	XX.	XXX.	107	X
From H 170 we recommend a second LED row													
	Ø 1320 / 51.9"	H 170 / 6.7"	W 70 / 2.7"	83	6.539	14 / 31.0	1590.	XX.	XX.	XX.	XXX.	170	X
	Ø 1600 / 62.9"	H 170 / 6.7"	W 70 / 2.7"	101	7.993	15 / 33.1	1591.	XX.	XX.	XX.	XXX.	170	X
	Ø 1800 / 70.8"	H 170 / 6.7"	W 70 / 2.7"	114	9.043	20 / 44.1	1592.	XX.	XX.	XX.	XXX.	170	X
	Ø 2300 / 90.5"	H 170 / 6.7"	W 70 / 2.7"	145	11.578	23 / 50.7	1593.	XX.	XX.	XX.	XXX.	170	X
	Ø 2600 / 102.3"	H 170 / 6.7"	W 70 / 2.7"	164	12.838	30 / 66.1	1594.	XX.	XX.	XX.	XXX.	170	X
	Ø 3500 / 137.8"	H 170 / 6.7"	W 70 / 2.7"	220	17.320	32 / 70.5	1595.	XX.	XX.	XX.	XXX.	170	X

LED	Standard:	Neutral-white	4000 K	xxxx.	40.	xx.	xx.	xx.	xxx.	xxx.	x
CRI > 90 Mac Adam 3 SELV L80 B10 100.000 h	Optional:	Warm-white	3000 K	xxxx.	30.	xx.	xx.	xx.	xxx.	xxx.	x
		Extra warm-white	2700 K	xxxx.	27.	xx.	xx.	xx.	xxx.	xxx.	x
		Tunable white*	2700 - 6500 K	xxxx.	80.	xx.	xx.	xx.	xxx.	xxx.	x
		RGB colour control*		xxxx.	60.	xx.	00.	xx.	xxx.	xxx.	x
	RGB + Neutral-White	4000 K		xxxx.	60.	xx.	40.	xx.	xxx.	xxx.	x
	* (only in combination with dimming DALI, CASAMBI) Combinations up to 2 stripes (H107) and 3 stripes (H170/230) of LED possible										

Dimming	Standard:	Without Dimmer	xxxx.	xx.	01.	00.	xx.	xxx.	xxx.	x
	Optional:	0 - 10 V	xxxx.	xx.	51.	00.	xx.	xxx.	xxx.	x
		DALI	xxxx.	xx.	61.	00.	xx.	xxx.	xxx.	x
		CASAMBI	xxxx.	xx.	81.	00.	xx.	xxx.	xxx.	x



Complete order number

Handcrafted in Germany, certified quality
 Conforms to UL-STD 1598 Certified to CSA-STD C22.2 No.250.0-08
 Protective rating of luminaire
 Light distribution inwards
 Protection class III: only suitable for very low voltage supply (<50V)
 Luminaires are suitable for mounting on ordinary flammable materials, which have an inflammation point of at least 200° C / 392° F

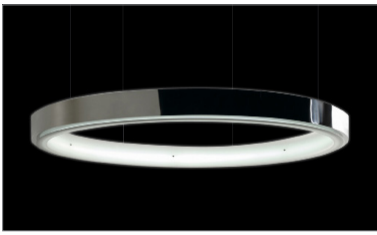
Technical data is subject to change. Errors and omissions excepted 1) Net lumen output: Losses due to diffusers and reflectors are considered. Lumen values refer to an ambient temperature of max. 35° C / 95° F. 2) Weight of lights without remote technical unit or canopy.

SATTLER

CIRCOLO

L-Version

Housing: Aluminium profile with L-shaped diffuser
 Design: SATTLER, Patented



reddot design award
winner 2009

Designpreis
Deutschland
2014
NOMINIERT

Focus Open
Gold 2009

750/900/1320
1600/1800 mm
29.5/35.4/51.9
62.9/70.8"

Housing in 1 part

2300/2600 mm
90.5/102.3"

2 parts

3500 mm
137.8"

3 parts

		Item No.	LED	Dimming	LED	Finishes	Power supply cable	Total height	Mounting version
Finish	Standard:	12 white, powder coated, similar RAL 9003							
	Optional (Powder coated):	11 white, similar RAL 9010							
		10 black fine textured							
		30 anthracite fine textured							
		33 sand silver fine textured							
		34 bronze satined							
		35 gold							
		36 brass							
		37 bronze fine textured							
		38 copper							
	Optional (Premium):	22 aluminium polished	X X X X.	X X.	X X.	X X.	X X X.	X X X.	X
		27 brush-finished aluminium							
		44 wood veneer, white borders							
		45 Leather							
		XX Custom finish							
Power supply cable	Standard:	Z 70 Silver							
	Optional:	Z 71 white							
		Z 72 grey							
		Z 73 black							
		Z 74 orange							
		Z 75 red							
		Z 76 green							
		000 Without power cable Current-carrying F, R, T, K	X X X X.	X X.	X X.	X X.	X X.	X X X.	X

---	--	-	---	--	-	---	--	-
-----	----	---	-----	----	---	-----	----	---

Complete order number



Handcrafted in Germany, certified quality



Conforms to UL-STD 1598 Certified to CSA-STD C22.2 No.250.0-08



Protective rating of luminaire



Light distribution inwards



Protection class III: only suitable for very low voltage supply (<50V)

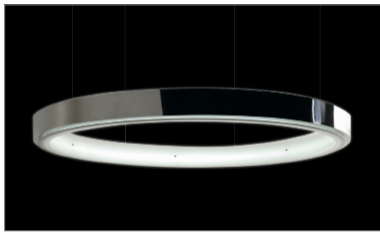


Luminaires are suitable for mounting on ordinary flammable materials, which have an inflammation point of at least 200° C / 392° F

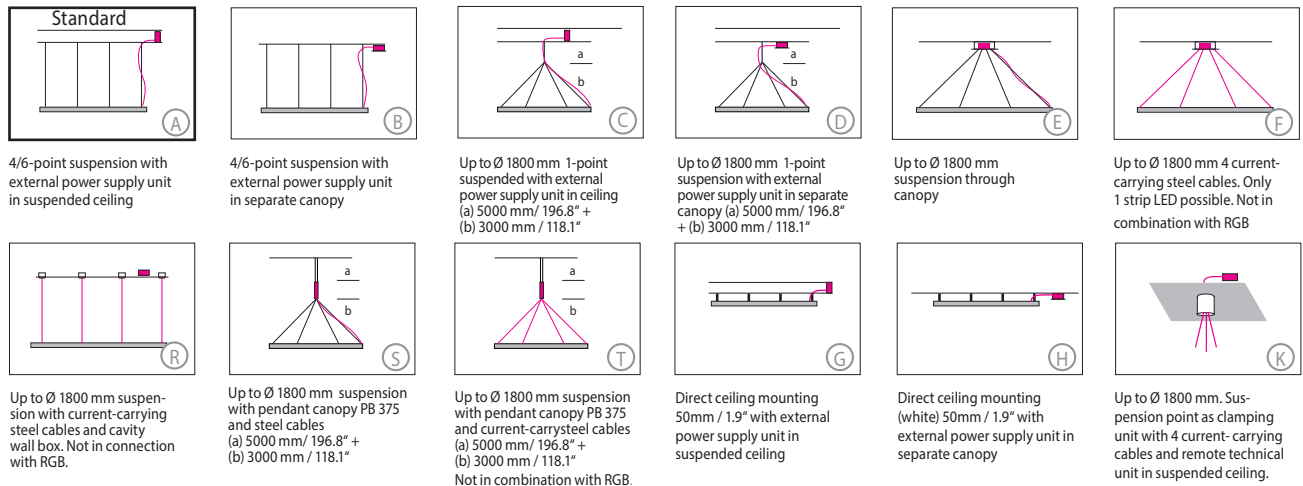
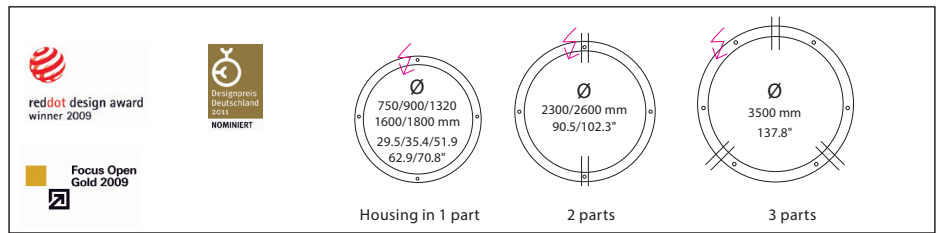
Technical data is subject to change. Errors and omissions excepted 1) Net lumen output: Losses due to diffusers and reflectors are considered. Lumen values refer to an ambient temperature of max. 35° C / 95° F. 2) Weight of lights without remote technical unit or canopy.

CIRCOLO

L-Version



Housing: Aluminium profile with L-shaped diffuser
Design: SATTLER, Patented



Mounting Version

A, B, C, D, G, H, R, K = Distance of external power supply unit to light fixture max. 10m / 39'4".

E, F = Minimum suspension height half the diameter of light fixture, maximum suspension height two times diameter of light fixture

Including steel cable suspension 5000mm/197"; Version F,R 3000mm/118";
Version C,D,S,T 5000 + 3000mm / 197"+118" and/or power supply cable 5000mm/197"

Item No.	LED	Dimming	LED	Finishes	Power supply cable	Total height	Mounting Version
X X X X.	X X.	X X.	X X.	X X.	X X X.	X X X.	-

	Power supply units:		
	Type / Size mm / inch L x W x H	For use with Mounting version	Protective rating
	DE 1F 363 x 143 x 56 mm / 14.2 x 5.6 x 2.2"	A,C,G,R,K (up to Ø 1800mm)	IP 20
	DE 2F 363 x 283 x 56 mm / 14.2 x 11.1 x 2.2"	A,G (up to Ø 3500mm)	IP 20

Input voltage for all external power supply units and canopy is 220-240 VAC 50-60 Hz

	Canopy:		
	Type / Size mm / inch Ø cover plate / body / H	For use with Mounting version	Protective rating
	DB 290 Ø 290 / 260 / 60 mm / 11.4 x 10.2 / 2.3"	B, D, E, F, H (up to Ø 1800)	IP 20
	DB 350 Ø 350 / 320 / 60 mm / 13.7 x 12.5 / 2.3"	B, H (up to Ø 3500)	IP 20
	PB 375 Ø 90 H 375 mm / 3.5 x 14.8"	S, T (up to Ø 1320)	IP 20
	PB 652 Ø 90 H 652 mm / 3.5 x 25.7"	S, T (up to Ø 1800)	IP 20

Colour: 12 white, similar RAL 9003, contact factory for other finishes
USA/Canada: Canopy mounts to 4" octagonal junction box.

Complete order number



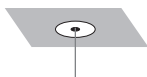
Optional



CASAMBI wall-switch

207. 00. 00. 00. 12. (white)
207. 00. 00. 00. 10 (black)

Casambi wall-switch is a wireless user interface that can be configured via the Casambi app. The four target buttons can control a scene or an animation of the user's choice or simply one luminaire, one luminaire group or all lights together if so desired. Up to 4 groups may be separately programmed. It comes with a wall mounting plate. The switch may be also used on its own as it is attached to the wall plate using magnets.



Power cable cover plate for mounting version A

200. 00. 00. 00. 12 (white)

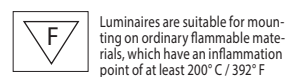
Consisting of a cavity ceiling box with 80mm round metal cover. Applicable to mounting version A.



Handcrafted in Germany, certified quality



Conforms to UL-STD 1598 Certified to CSA-STD C22.2 No.250.0-08



Technical data is subject to change. Errors and omissions excepted 1) Net lumen output: Losses due to diffusers and reflectors are considered. Lumen values refer to an ambient temperature of max. 35° C / 95° F. 2) Weight of lights without remote technical unit or canopy.